

WISDOM NATURE

A FUNDRAISING EXHIBITION AND AUCTION
IN AID OF LE CIEL FOUNDATION
CHRISTIE'S LONDON, 8TH APRIL 2020

LeCiel Foundation



IN ASSOCIATION WITH

CHRISTIE'S



WISDOM NATURE

A FUNDRAISING EXHIBITION AND AUCTION
IN AID OF LE CIEL FOUNDATION
CHRISTIE'S LONDON, 8TH APRIL 2020

LeCiel Foundation



IN ASSOCIATION WITH

CHRISTIE'S



ABOUT US

Dedicated to helping people navigate a global paradigm shift, UK based charity Le Ciel Foundation addresses humanity's separation from nature and from its true nature. Bridging the know-how and ingenuity of modernity with the wisdom of ancestral traditions, we adopt a systems change approach to catalysing both individual and collective transformation.

Guided by the knowledge and values of wisdom traditions, Le Ciel Foundation is supporting the emergence of a paradigm in which people, nature and all living beings can thrive.

OUR CURRENT INITIATIVES

CULTURAL PRESERVATION AND YOUTH EMPOWERMENT IN XAI XAI, BOTSWANA 2018 ONWARDS

In 2018, the Botswanan Elders from *The Council of Twelve and Above* established educational youth camps.

The “Xai Xai Cultural Preservation and Youth Empowerment Programme” aims to advance leadership skills, the development of cultural appreciation as well as a mentorship programme for the youth of Xai Xai and surrounding areas.

With the support of strong community mentors and youth leaders, this project not only develops pathways for livelihood improvement but strengthens and passes on the traditional Khoisan nomadic way of life, otherwise being lost. This includes skills to live off the land, the use of medicinal plants and trance dance, among other local customs.

Very few other initiatives like these exist to preserve what is potentially the oldest form of human wisdom which can be traced back genetically to the earliest known human lineages.

THE HOLISTIC VISIONS SYMPOSIUM NOVEMBER 2018 ONWARDS

Bringing together innovators, investors and influencers from over 40 countries with Elders from wisdom traditions, the *Holistic Visions Symposium* sets in motion community-led, interconnected solutions around crucial topics for humanity, complementary to the United Nations’ 17 Sustainable Development Goals. Addressing the fundamental tenets of a more advanced, balanced and ecologically-minded society, this initiative is founded on an understanding that all issues are deeply interconnected and that in order for solutions to create a global, lasting positive change, it is essential to unite the spiritual and material aspects of life. Participants collaborate on this initiative year round and will be meeting for a third time in October 2020.

Find out more at: lecielfoundation.com/holistic-visions-the-symposium





THE TWELVE OFFICIALLY RELEASED ONLINE ON 12TH NOVEMBER 2019

The Twelve is a feature length documentary that gives a voice to wisdom traditions through the words of the twelve Elders that took part in Le Ciel Foundation's *Council of Twelve* and *Above*, at the United Nations in November 2017. Each of the twelve shares a long forgotten wisdom and knowing of our eternal and complex connection with Nature and all of humanity, reminding us what it means to be human and how to live in harmony with each other and with Nature.

The Twelve is available to be downloaded and streamed for free in many languages at: lecielfoundation.com/watch-the-twelve

WISDOM TRANSMISSION FILMS 2020

As a follow-up to *The Twelve*, Le Ciel Foundation will be producing a series of educational films presenting pragmatic perspectives on issues we face in daily life. For example, how do wisdom traditions deal with conflict, relationships, love, education, birth and death, living in a community, food systems, having a deeper connection to nature and spirituality. We will be interviewing and filming wisdom traditions in their communities, with the aim of supporting a reconnection to behaviours, values and principles founded on ancestral knowledge.

THE TWELVE FOR CHILDREN 2020

Following on from the success of *The Twelve*, we will be creating a version of the film adapted to a younger audience. Allowing children to take on board ancestral wisdom and connect to the magic of life through the eyes of the Elders, this initiative will be integrated into school curricula so that we may support future generations connect with the beauty of nature and their own essential nature.

RE-AWAKENING OF EARTH'S SACRED SITES 2020

Le Ciel Foundation is supporting a collaborative initiative led by Elders of wisdom traditions. These Elders have identified sacred sites considered as key energetic points of the planet and are working to restore these sites through rituals and ceremonies designed to rebalance the energetic meridians of the Earth. In support of this vision, *The Holistic Visions'* group *One Ancient Future* aims to protect and preserve sacred sites, the land they are on and their tangible and intangible cultural heritage.

**PROJECT SDG+
2021**

This initiative is a platform showcasing humanity’s potential to co-create conscious systems and solutions that support all living beings and the planet. It embodies a dedicated effort to go beyond the United Nations’ Sustainable Development Goals with a set of values and principles inspired by wisdom traditions.

In 2021, at the World Economic Forum, SDG+ will present an experiential space which will give a voice to indigenous communities and other marginalised groups, showcase holistic solutions that honour the interconnectedness of the SDGs, reintroduce ancient wisdom into our modern paradigm and support entrepreneurs, organisations and investors who act with heart and purpose. This event will create a template that can be replicated in cities and conferences around the world, in support of local initiatives for people and planet.

WISDOM AND NATURE EXHIBITION AND SALE

Le Ciel Foundation in partnership with Christie’s is hosting *Wisdom and Nature*, a fundraising exhibition and auction taking place in New York and London. Bringing together a collection of 55 artworks generously donated by artists and galleries from around the world, *Wisdom and Nature* reveals experiences and perceptions of interconnectivity, the beauty of our planet and the wisdom of its people.

In 2017, Le Ciel Foundation held the first *Wisdom and Nature* exhibition in London, Paris and New York. Providing an insight into cultures rooted in ancestral traditions and depicting the awe-inspiring Earth on which we all live as one interconnected ecosystem, the exhibition culminated in an auction raising \$300,000 in aid of the Foundation. These funds have supported the realisation of several projects, notably, a meeting of twelve wisdom tradition Elders at the United Nations in New York and the *Holistic Visions Symposium* 2018. Donations of \$10,000 were also contributed to the communities of each of the wisdom tradition Elders who took part in *The Council of Twelve and Above*.

Funds raised during *Wisdom and Nature* 2020 will support the realisation of the many exciting initiatives Le Ciel Foundation is working on.

The third edition of *Wisdom and Nature* will take place in early 2022.





WISDOM NATURE

VIEWING DATES AT CHRISTIE'S

NEW YORK

28 February-4 March 2020

20 Rockefeller Plaza, New York, NY 10020

10.00am- 5.00pm except Sundays 1.00-5.00pm

LONDON

6-9 April 2020

8 King St, St. James's, London SW1Y 6QT

9.00-5.00pm

LIVE FUNDRAISING AUCTION IN AID OF LE CIEL FOUNDATION

Wednesday 8th April 2020

7:30pm

CHRISTIE'S

8 King St, St. James's, London SW1Y 6QT

INQUIRIES

Jessie Balfour-Lynn

jessie@lecielfoundation.com

+44 7799636786



WITH MUCH GRATITUDE
TO ALL THE ARTISTS

Adam Waymouth
Adrian Houston
Alexander Khimushin
Anouska Beckwith
Antônio Obá
Aranka Israni
Azza Fahmy
Brígida Baltar
Carlito Dalceggio
Cássio Campos Vasconcellos
Catalina Swinburn
Charlotte Leimer
Chloë Natalia
Christopher Roche
Daniel “El Suchi” Garcia
David Kassman
Delfina Muñoz de Toro
Dimas Paredes Armas
Dominic Lam
Fabrizio Giacomelli
Gaston Ugalde
Henry and Richard Hudson
Joaquín Vila
Justin Guariglia
Katy Lynton
Kito Mbiango
Llewellyn Xavier
Lucho Brieva
Lucy Temple
Malou Ericsson
Mamakan
Marshmallow Laser Feast
Mat Chivers
Odyssée Dao
Oliver Barnett
Paulo Nazareth
Peter Matthews
Philip Volkers
Regina Dejiménez
Roe Aminof
Roseline de Thélin
Ruben Brulat
Sidney Regis
Simon English
Sukhi Barber
Susan Derges
Takako Matoba
Tatyana Murray
Temple Jewels Ibiza
Thia König







THE LIVE AUCTION
LOTS 1-26



1

ADAM WAYMOUTH (B. 1981)

Homage To Rory Mcewen

Signed on back
Hahnemühle Photo Rag
109 x 82 cm.
Executed in 2017
Edition 1 of 6

Estimate £5,000

DONATED BY: The artist, courtesy of Tristan Hoare Gallery

Adam Waymouth challenges our perception of decay, underlining the beauty and significance of natural waste. His transformation of simple natural forms into complex, tactile objects that take on a charged symbolic meaning is inspired by ancient Egyptian mythology.





2

ADRIAN HOUSTON (B. 1962)

New Forest Oaks

Signed on front
Pigment print on Somerset Archival paper
128 x 102 x 10 cm.
Executed in 2017
Edition 2 of 3

Estimate £12,000

DONATED BY: The artist

Adrian Houston's work has been influenced for as long as he can remember by the need to protect what we have, before it is too late. "While witnessing Earth's natural power, it is sometimes difficult to see its underlying fragility. However, it can be felt by scratching beneath the surface". Increasingly concerned that so many indigenous trees were being affected by diseases and climate change, Houston decided to give trees a voice through his series *A Portrait of the Tree*, of which *New Forest Oaks* is part of. The artist aims to educate us on how trees connect us all on a universal level and the vital role they play in our lives. We would not be here without them.

The New Forest is one of the last remaining unenclosed pasturelands in southeast England. Once proclaimed to be the playground of William the Conqueror, today it provides a safe habitat for many rare birds and trees. One of the most rejuvenating therapies is to simply walk through the forest and gaze at the trees.



3

ALEXANDER KHIMUSHIN (B. 1970)

Anujin

Signed Certificate of Authenticity provided with artwork
Canson Infinity Platine Fibre Rag
90 x 60 cm.
Executed in 2017
Edition 1 of 1

Estimate £11,600

DONATED BY: The artist

Through photography and storytelling, Siberian-born Alexander Khimushin documents the diversity of traditional cultures around the world with portraits of indigenous people. His internationally acclaimed photo project, *The World in Faces*, aims to create greater exposure and dialogue around indigenous rights, building tolerance and respect between all.

This is a portrait of Anujin, a young Buryat woman from Mongolia in traditional clothing. The Buryat People are one of the indigenous ethnic groups of Siberia living across the borders of Russia, Mongolia and China. Baikal, the world's largest and deepest freshwater lake, is the sacred centre of their homeland region, which is also the centre of Buddhism in Russia, a practice that the Buryats combine with their own shamanic rites.



4

ANOUSKA BECKWITH (B. 1987)

Do Not Be Lonely

Signed on back
Hahnemühle Photo Rag
60 x 90 cm.
Executed in 2014
Edition 6 of 10 + 1AP

Estimate £3,000

DONATED BY: The artist

This photograph, like all of Anouska Beckwith's projects, is created as a prayer or an offering to the Earth. Inspired by the 13th century Persian sage Rumi's famous saying, "Do not feel lonely, the whole universe is inside of you", the image was taken at sunset, as the colours turned from pastel hues into a silvery twilight. This work depicts the subject immersed in stars as if creating a portal between worlds.

"Ever since I can remember I have been a disciple of Mother Earth." Discovering at a young age that someone close to her was dying, Beckwith set off on a spiritual quest to find a thread of truth that she could trust for herself. She discovered it at a gathering of medicine people where she danced and wept for all that had been and all she had lost on the way. "It was the most incredible experience to finally feel like I was coming to a place I had always longed for yet until that moment didn't know existed."



5

ANTÔNIO OBÁ (B. 1983)

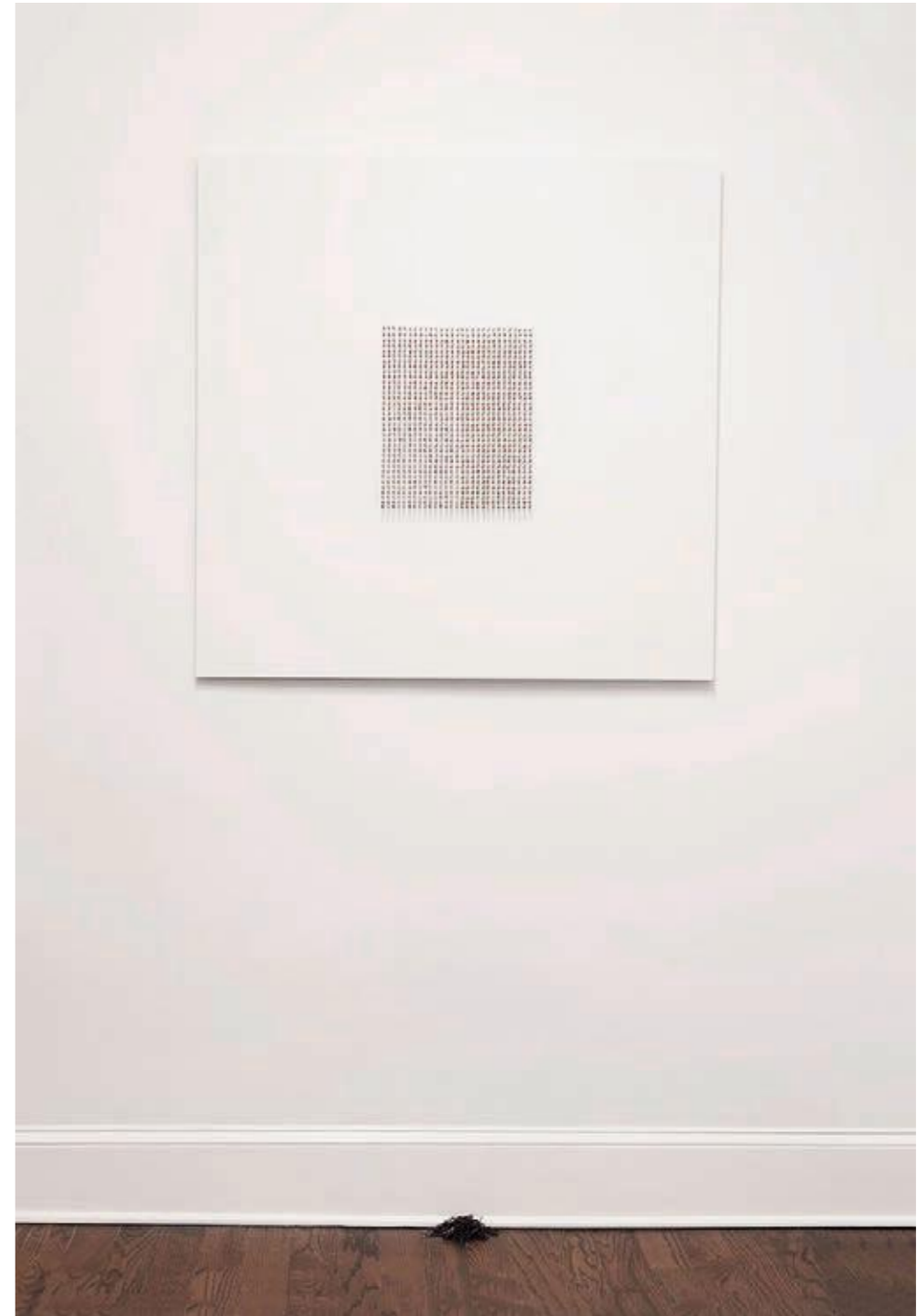
Pregação

Wood and Nails
100 x 100 cm.
Executed in 2018
Unique

Estimate £10,800

DONATED BY: The artist, courtesy of Mendes Wood DM São Paulo,
Brussels, New York

Antonio Obá's practice challenges widely accepted histories and traditions where indigenous or minority communities are effectively written out. Through his performance pieces, he captures the power of ritual to recognize these forgotten groups and their experiences. In this piece, the artist uses the double entendre of the word 'pregação', which can mean a nail or to preach. Here, he alludes to the problematic fixity of our narratives, and invites us to listen and expand our views instead of preaching what we think we already know.



6

ARANKA ISRANI (B. 1982)

Mother & Child

Signed on back
Vibrachrome Metal Print
76 x 101 cm.
Executed in 2017
Unique

Estimate £5,500

DONATED BY: The artist

Mother & Child invokes the Feminine, the Masculine, and the principle of Union. Inspiring a mirroring of that which lies within our own reflection.

When viewed as moving into one another, as a uniting of spirit and matter, these halves create a marriage of self and shadow. Seen instead as a separation, the physical and the spiritual abandoning one another, this image seems to disclose a fundamental and sacred symbol of mitosis, as the physical and ethereal step apart to view one another - or turn away from one another completely.

When this same image is viewed as fixed, the physical in balance with the reflected non-physical, the creation of a third presence is revealed, a new whole emerges, evoking creatures of a mythological or dream origin.

A reflection of nature, *Mother & Child* accentuates notions of 'animism' and 'spiritual reality', and its relevance within and beyond indigenous culture.



7

CARLITO DALCEGGIO (B. 1974)

La Femme Papillon

Signed on back
Acrylic on Paper
82 x 203 cm.
Executed in 2018
Unique

Estimate £10,000

DONATED BY: The artist

Carlito Dalceggio's colorful world, at once folkloric and futuristic, moves between genres and cultures all in the service of creating the mythology of now. Listening to a live classical orchestra at the Borusan Art Foundation in Istanbul, he co-created a multi-media exhibition proposing the democratization of spirituality and in 2018 painted the sails of *Infinity*, the boat that sailed to the Arctic, to raise awareness for climate change and plant the Flag of Planet Earth on the ice caps.

La Femme Papillon is part of the Mythologia Libre Manifesto for the liberation of the spirit. In Dalceggio's own words; "These visions emerge from vivid dreams and spontaneous visions as bridges from the ancestors to our world. Seeking to find a reason to exist; to answer universal questions: Mythologia Libre is a scream for peace, a journey to our unknown. Mythologia Libre travels back to the depth of times to reach the origin. To erase all boundaries."



8

CÁSSIO CAMPOS VASCONCELLOS (B. 1965)

A picturesque voyage through Brazil #144

Inkjet Print on Cotton Paper

75 x 112 cm.

Executed in 2017

Edition 1 of 5 + 2AP

Estimate £5,500

DONATED BY: The artist, courtesy of Galeria Nara Roesler

Feet on the ground, camera in hand, Cássio Vasconcellos's gaze invades the tropical forest depicting its lush beauty. The artist is following in the footsteps of his great-great-grandfather, Ludwig Riedel, the botanist of the Langsdorff Expedition. A German-Russian naturalist and explorer under the auspices of the Russian czar, Baron de Langsdorff documented his findings through paintings and artistic works. These works are cherished by art lovers such as Cássio. Their romanticized paintings and detailed prints of Brazilian nature and local customs create a visual anthropological highlight of Brazil's 19th century socio-art history.

In these works, the magic and mystery of the tropical land that so captivated these men are reproduced with the same intensity and finesse in *A Picturesque Voyage Through Brazil*. They reveal a quasi lithographic process in their minute details, bathed in penumbral light in the heart of the tropical forest that so fascinated his ancestor.



9

CATALINA SWINBURN (B. 1979)

Sacrum Viridi

Woven Paper From Old Maps
180 x 150 x 10 cm.
Executed in 2019
Unique

Estimate £11,500

DONATED BY: Catalina Swinburn Studio

“There is a need to return to traditional culture, to relate in a more respectful way with nature, to focus on sustainable projects that aspire to a certain degree of transcendence”.

Catalina Swinburn’s work attempts to reconcile different doctrines in a process of transculturalization and miscegenation, the union of the sacred and the secular. Previously used in rituals, her new series of woven paper works carry a spiritual history and resemble stitches of memory that remain; reflecting on catastrophes around the world where cultural sites are displaced or destroyed. Regenerating these narratives articulates a sense of urgency and a mode of resistance as we face a moment in time where established concepts come into question.





10

CHRISTOPHER ROCHE (B. 1967)

Kartik Snana

Signed Certificate of Authenticity provided with artwork
Giclée Archival Print
146 x 106 cm.
Executed in 2014
Edition 1 of 8

Estimate £3,200

DONATED BY: The artist

Christopher Roche has spent the last six years exploring ancient and disappearing faith traditions around the world, a theme which he believes is both pertinent and eternal, reflecting a fundamental aspect of the human condition that dates back to the dawn of civilisation.

Millions of pilgrims flock to Varanasi, the holiest city in the Indian subcontinent where during Kartik Snana they bathe in the Ganges in the belief that the holy water washes away their sins, not only of this life but of all previous lives.



11

DAVID KASSMAN (B. 1971)

Blinking

C-Type Print
106 x 200 cm.
Executed in 2011
Edition 7 of 10

Estimate £11,500

DONATED BY: The artist

For over twenty years, David Kassman has traveled all over the world photographing both urban and rural communities. He works to highlight the beauty of the world we inhabit, humanity's daily struggle with climate change and those magical moments we can miss in an instant.

Shot in Israel's Juda Desert, *Blinking* is part of a body of work that explores the passing of time and the winter sunset.



12

DELFINA MUÑOZ DE TORO (B. 1992)

Kênêshahu

Signed on front
Watercolour on Paper
40 x 30 cm.
Executed in 2018
Unique

Estimate £6,000

DONATED BY: The artist

Delfina Muñoz de Toro, an international artist and musician, has dedicated her life to indigenous activism and ancestral arts. Director of the Yawanawa art school - Kênê Waty Shuhu, she works on cultural development within indigenous communities of the Amazon rainforest, bridging worlds through art and training artists in periods of deep study and co-creation. Her artistic direction aims to weave art and spirituality, while fortifying alliances that work towards an ever more harmonious connection to nature.

Kênêshahu is a painting of a Yawanawa woman painted with the sacred designs of her people, portraying the mysteries and beauty of the feminine forces of the rainforest.



13

DIMAS PAREDES ARMAS (B. 1954)

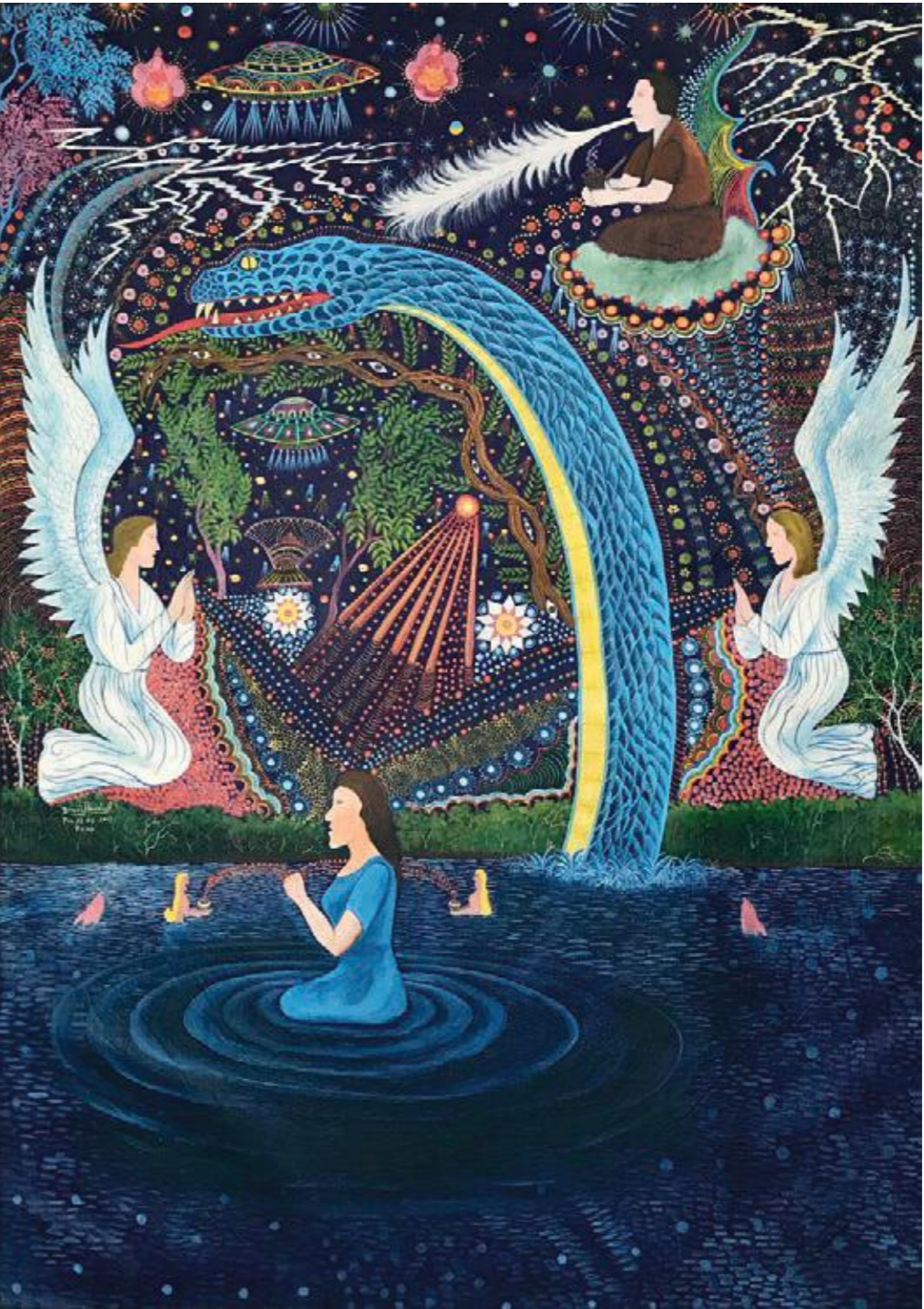
El Renacimiento del Maestro

Signed on front
Oil
85 x 120 cm.
Executed in 2017
Unique
Estimate £9,000
DONATED BY: The artist

Former student of one of Peru’s most famous artists Pablo Amaringo, Dimas Paredes Armas lives with his family in the city of Pucallpa, in the Amazonian rainforest of eastern Peru, where he dedicates his days to painting in his house surrounded by his five children.

The artist is carrying on his father’s legacy as a powerful shaman, by painting the visions, stories, and vast knowledge of traditional Amazonian plant medicine his father shared with him.

His paintings of powerful, medicinal plants and trees, angels and serpents reveal the rich and mysterious spiritual universe of the vegetalista or ‘plant spirit shaman’.



14

**DOMINIC LAM (B. 1947)
AND FABRIZIO GIACOMELLI (B. 1958)**

The Gold Leaf

Signed on back
Photography on Canvas
60 x 100 cm.
Executed in 2019
Unique

Estimate £8,000

DONATED BY: The artists, courtesy of Wellspring Foundation

Co-created by artists Dominic Lam and Fabrizio Giacomelli, *The Golden Leaf* originated through celebration of the Sino-Italian millennial friendship, honoring peace and harmony. The artwork was originally due to be displayed during the exhibition at the Venice Biennale 2019; however, one month prior to the opening, Venice was tragically hit by the worst storm in 53 years, damaging the city and this very art exposition. Recognising the need to overcome the reality of climate change, the painting was immediately restored and exhibited in Venice symbolizing the re-opening of the city as a new beginning.

The Golden Leaf emerged out of two unique techniques. Through Giacomelli's 'Analog-Noise' process, involving use of analogue cameras combined with his proprietary physical flue filter to shredder the light, as well as Dr. Lam's invention of the Chromoskedasic painting process that generates a wide spectrum of colours without the use of pigments or dye. In this manner, Lam also invented a novel painting medium, which is very rare in the history of art. The result is an amazing spectrum of visual effects that recreate impressionistic style through photography..





15

GASTON UGALDE (B. 1944)

Untitled

Signed Certificate of Authenticity provided with artwork
Inkjet print on cotton paper
110 x 160 cm.
Executed in 2019
Edition 3 of 3

Estimate £6,000

DONATED BY: The artist, courtesy of Salar Galeria de Arte

Gaston Ugalde's photography deals with physical interventions presented in a combination of ephemeral installations, performances and rituals within visually stunning landscapes.

With minimal use of materials and no impact on nature, the artist creates surreal settings that speak of nature conservancy and invite the viewer into a state of contemplation as to how the natural world and man can better fit together.



16

JOAQUÍN VILA (B. 1980)

Neoshaman III

Signed on both sides
Acrylic on Canvas
193 x 134 cm.
Executed in 2017
Unique

Estimate £12,800

DONATED BY: The artist

Joaquín Vila is constantly investigating the connection between humans and the natural world, particularly considering the processes of transformation, fusion and symbiosis that occur in nature.

Neoshaman III captures the integration of Sufism, ancient Egypt and the Dogons. It is part of a series on Neoshamans that represent the syncretism of the 21st century, a union between cultures and all paths of wisdom. The lines and dots translate the vibrations, energy, and electricity that runs through every living being, creating an optical effect of subtle movement, almost imperceptible, but present.



17

KITO MBIANGO (B. 1966)

Dissolve The Ego, So Your Soul Can Emerge....

Signed on front and embossed with a Certificate of Authenticity
Digital Print on Enhanced Velvet Paper
90 x 116 cm.
Executed in 2019
Unique

Estimate £5,000

DONATED BY: Kito Mbiango Studio

Kito Mbiango is a Belgian-Congolese painter and mixed media artist whose works blur cultural boundaries. Mbiango finds inspiration in scientific and esoteric concepts, vintage photographs and cartography. He transforms these materials into a new visual language in which colors, textures and geometry are used to reflect the eternal dance between humans and the natural world. Through his work, he seeks to create experiences of connection, to incite waves of action on climate change and social justice.



LLEWELLYN XAVIER (B. 1945)

Pink Flamingo Ballet

Signed on back
Oil on Canvas
152 x 91 cm.
Executed 2000-2015
Unique

Estimate £60,000

DONATED BY: The artist

From early representational oil paintings challenging racial and political themes in the 1960s and 70s, to more abstract series of watercolors influenced by ancient myths, Llewellyn Xavier's work is a carefully considered response to his environment, reflected by subjects encompassing the natural world.

In *Pink Flamingo Ballet*, the artist uses vibrant colors and thick layers of oil paint to create a rich, sculptural composition. The work explores the artist's recurring themes of transition, dynamism, and our global community, and reimagines the ways in which we engage in both socio-political and spiritual discourse.



19

LUCY TEMPLE (B. 1965)

Scotch Bonnet

Signed on back
Watercolour Paint on Paper
130 x 135 cm.
Executed in 2019
Unique

Estimate £9,000

DONATED BY: The artist

Lucy Temple, who specialises in painting sacred geometric patterns, mostly of ancient Islamic designs, notices patterns in everything, from nature to our behaviours, emotions and thinking. Her work reminds us that there is a resonance between the world within us and what we create and express around us. Creating traditional geometric patterns allows the artist to join the dots inside her mind, describing the process as one that brings her peace and calm, wisdom and strength.

"There are intricate patterns in flowers, trees, the way clouds drift and how sand forms when the tide goes out. Patterns on our skin and in the iris of our eyes. Patterns within the stars and solar system and everything under the sea. On fish scales and snails, in the way birds fly. It is the universal law of nature- we create patterns from the geometry of circles."



20

MAT CHIVERS (B. 1973)

WCYCRCB

Signed on back
Oil on Gesso on Wood Panel
90 x 130 x 5 cm.
Executed in 2013
Unique

Estimate £5,000

DONATED BY: The artist

The work of British visual artist Mat Chivers looks at some of the fundamental phenomena that drive our thoughts and actions. He explores ideas relating to perception, cognition, evolutionary process, ecology and ethics by bringing traditional analogue approaches to counterpoint with state-of-the-art digital technologies. His practice in sculpture, drawing, film and performance often involves close collaborations with individuals and institutions in the fields of science, technology and academia. Chivers's work is based on in-depth research and a response to place, to articulate some of the wider relationships that we all share and on which we all depend.

Threading through the hand imprints is a geometric matrix that describes the inter-related nature of reality. Reminiscent of a Rorschach ink blot, WCYCRCB has a bilateral near-symmetry that mirrors our own. For 200,000 years, human beings have handled and transformed the materials of the world, and those materials have shaped us in return. In this time of unprecedented change and evolution we are beginning to remember that our existence depends on a healthy symbiosis with the more-than-human realities outside and within us.



21

MARSHMALLOW LASER FEAST (B. 2011)

Lungs #0188-1

Epson Semi Gloss
76 x 76 cm.
Executed in 2019
Unique

Estimate £5,000

DONATED BY: The artist

Marshmallow Laser Feast (MLF) is a London based experiential collective working at the intersection of art, science and technology, expanding perception and exploring the human connection with the natural world. The veil of the known world is removed to reveal networks, processes and systems that are sublime and fundamental to life on Earth. Informed as much by playfulness as research, MLF's work illuminates hidden natural forces that surround us and break the boundaries to worlds beyond our senses.



22

OLIVER BARNETT (B. 1979)

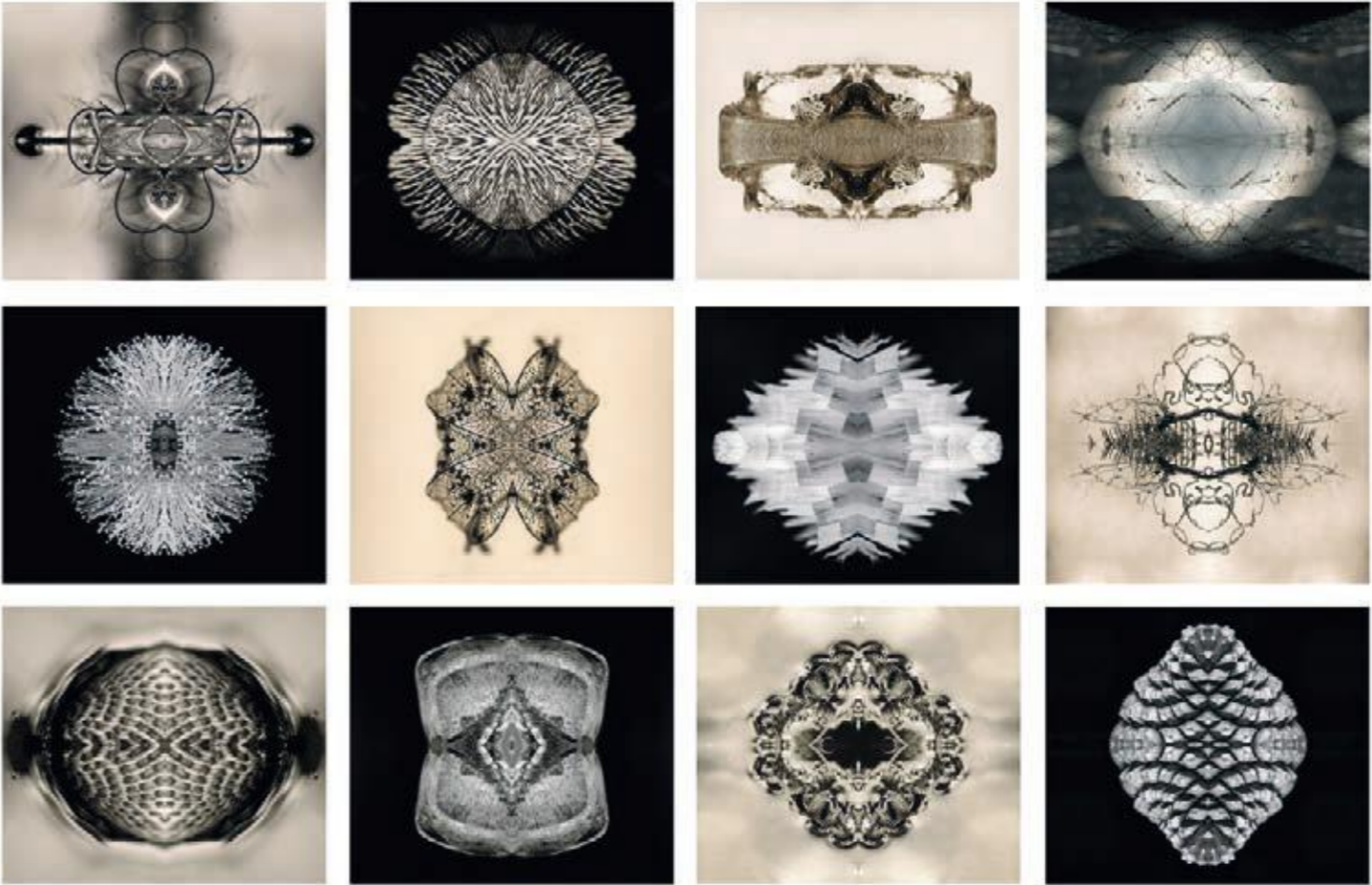
Cosmochrome

12 x Archival Diasc Prints
140 x 210 cm.
Executed in 2014
Edition 1 of 3 + 2AP

Estimate £4,000

DONATED BY: The artist

“To witness the perfect order in nature, to observe how organisms coevolve with their environment, is to greater fathom the Cosmic phenomenon.” This monochromatic series intends to illuminate divergent components of the natural world at varying stages of the biological life cycle, bringing a visual aesthetic to the life cycle that binds all living matter on Earth. The presentation of Water, Rock, Earth, Root, Seed, Wood, Leaf, Petal, Flower and Feather as a set of free floating entities suspended in space, is dedicated to the integration of earthly and cosmic realms and the conscious co-habitation of humanity with its host planet.



23

ROSELINE DE THÉLIN (B. 1964)

Light Mandala - Angel 1

Reflective Aluminium Print
90 cm. Diameter
Executed in 2018
Edition of 7

Estimate £4,500

DONATED BY: The artist

Bewitched by the mystery of light traveling from the far end of the universe, carrying information from other worlds, light is both the subject and medium of creation for Roseline de Thélin.

Finding inspiration in astronomy, quantum physics, subtle and parallel realities, the interplay of perceptions and consciousness, in 2003 the artist started using light transmitting fibre optics to develop her own technique to sculpt light. *Light Mandala - Angel 1* emerged from these experiments with light.



SUSAN DERGES (B. 1955)

Water Drop Wort 2

Digital C-Type Print
76 X 47 cm.
Executed in 2012
Edition 1 of 5

Estimate £6,500

DONATED BY: The artist

Water Drop Wort 2 is part of a body of work called *Alder Brook*. The works focus on small areas of wetland and the biodiversity of plant life and trees that have a symbiotic relationship to the streams and tributaries that run through them.

In this photograph, taken with a bird's eye view, the sky collapses into imagery of undergrowth through its reflection on the water's surface. The relationship of the viewer to the scene is ambiguous in the sense that she could either be immersed beneath the waters' surface and looking up at the sky, or looking down into the mirror surface of the water through trees and fauna, such as the water dropwort in this particular piece. The viewer is placed inside the fluid and interrelated environment rather than being an on-looker or external 'other' to the scene.



25

TATYANA MURRAY (B. 1973)

Tree of Light / Life

Signed on back
Refracted Light, Glass, Acrylic Glazing, Led Lights
102 x 72 x 18 cm.
Executed in 2019
Unique

Estimate £14,000

DONATED BY: The artist

Tree of Light / Life is composed of stacking, multiple clear sheets that allow a three-dimensional floating image to reveal itself through the manipulation of illumination, temperature and refraction. The subject matter is elevated to its spiritual essence. Without the light source the image cannot exist.

Tatyana Murray explores a universe in which forms continually verge on collapse and rearrangement, creating a constant flux. There is a visual tension between harmony and chaos, but at the heart of the movement lies stillness, the 'space between', where the spectator can slow down, catch their breath and reflect.



26

THIA KONIG (B. 1965)

Vang Vieng

Signed on front
Silver Gelatin Print
60 x 60 cm.
Executed in 1998
Edition 5 of 26

Estimate £3,100

DONATED BY: The artist

Thia Konig photographed *River Bikes* when travelling through the newly-opened-to-the-world country of Laos in 1998. Vang Vieng was a small village back then, and this was the 'road' to the other side of the river. The artist was so taken by the country on her first visit that she returned the following year. The change and growth that occurred in such a short time felt heartbreaking. Now more than 20 years later, the river has a bridge, restaurants with umbrellas, and tourists floating by on innertubes. This photograph is a glimpse into a world we're losing.





THE ONLINE AUCTION
LOTS 27-55



27

AZZA FAHMY (B. 1970)

Scarab and Falcon Head Necklace

Sterling Scarab and Falcon-Headed Collar Necklace, with layers of semi-precious beads and Scarab charm pendants
Edition Pharaonic Collection
Executed in 2012

Estimate £1,210

DONATED BY: The artist

Renowned for 'translating' international cultural and historical references to modern contemporary jewellery, Azza Fahmy's piece embodies characteristics of the Pharaonic era. Intricate details forged in sterling silver, feature multi layers of black spinel beads, scarab pendant charms and a double falcon head clasp. Carefully designed to bring to life ancient Egyptian stories, *Scarab and Falcon Head Necklace* captures the romanticism of the Pharaonic 'Amarna' period that celebrated love and wisdom, and symbolized transformation.



28

BRÍGIDA BALTAR (B. 1959)

A Coleta da Maresia (Sea Air Collecting)

Hahnemühle Photo Rag
68 x 100 cm.
Executed in 2001
Edition 2 of 5

Estimate £2,300

DONATED BY: The artist, courtesy of Galeria Nara Roesler

Brígida Baltar's *A coleta da maresia (Sea Air Collecting)*, synthesizes and perpetuates elements from transitory events in the artist's life. Since the mid 1990s, Baltar's focus has been on capturing ephemeral, atmospheric phenomena such as mist, the gathering of the dew, or the sea air. These occurrences settle in the space between the banal and the extraordinary. They transfer our gaze to the almost invisible elements of nature present in our daily lives.



29

CÁSSIO CAMPOS VASCONCELLOS (B. 1965)

A picturesque voyage through Brazil # 30

Inkjet Print on Cotton Paper

75 x 112 cm.

Executed in 2015

Edition 1 of 5 + 2AP

Estimate £5,500

DONATED BY: The artist, courtesy of Galeria Nara Roesler



30

CÁSSIO CAMPOS VASCONCELLOS (B. 1965)

A picturesque voyage through Brazil # 21

Inkjet Print on Cotton Paper

75 x 112 cm.

Executed in 2015

Edition 2 of 5 + 2AP

Estimate £5,500

DONATED BY: The artist, courtesy of Galeria Nara Roesler



31

CHARLOTTE LEIMER (B. 1995)

Untitled (Cloud)

Wire, Plaster Wraps
92 x 112 x 76 cm.
Executed in 2019
Unique

Estimate £3,500

DONATED BY: The artist, courtesy of Allegra Projects

Charlotte Leimer is a Swiss artist based in the Engadine valley whose sculptural practise stems from her interaction with the landscape and local environment.

The Engadine valley is particularly special for its light. Light is so intangible, clouds are what makes the light come through, they shape the way light is viewed. In a sense, clouds are the guiding force for how light enters our lives, how shadows play with our mind and therefore how we see and perceive.

“Clouds go through cycles, they pick up energies. Transformative, they are everything and everywhere.” Leimer has always been fascinated by the folk-like energy of clouds in the area, shaped in the legend of the infamous Maloja snake; a being that meanders through the valley, slowly chasing you.

Leimer’s ‘clouds’ weave a dialogue of the innocence in nature combined with a sense of darkness and mysticism, coupled with playfulness and humour.



32

CHLOË NATALIA (B. 1976)

Bring The Outside In #1

Signed on front
Paper Sculpture in Acrylic Box
100 x 100 x 25 cm.
Executed in 2019
Unique

Estimate £4,000

DONATED BY: The artist

Bring the Outside In is a series of paper wall sculptures that portray and magnify the sublime detail of the floral world. The pieces are constructed entirely by hand with scissors and a surgical blade and are then sculpted with heat to transform two dimensional paper into three dimensional fluid forms.

"I study the forms and composition of my favourite flowers to recreate these oversized fanciful blooms. Playing with scale in this way, I hope to offer the opportunity of a different perspective and new admiration for the beauty that surrounds us."



33

CHRISTOPHER ROCHE (B. 1967)

Baba Luxman

Signed Certificate of Authenticity provided with artwork
Giclée Archival Print
146 x 106 cm.
Executed in 2014
Edition 1 of 8

Estimate £2,700

DONATED BY: The artist

Baba Luxman is a Holy Man that has renounced the material world. Living along the ghats of Varanasi, one of the oldest cities in the world, he regularly bathes in the Ganges in the belief that the holy waters wash away his sins.



34

DANIEL “EL SUCHI” GARCIA (B. 1986)

Sumaúma

Signed on back
Hahnemühle Photo Rag
109 x 71 cm.
Executed in 2019
Unique

Estimate £3,500

DONATED BY: The artist

This photograph of one of the Amazon’s tallest trees explores the interconnectivity of all things. Considered “the mother of all trees”, it is revered as the most sacred tree in many indigenous traditions from the Mayan of Guatemala to the Amazonian tribes in Brazil. The Samaúma tree, connects the jungle, the spirit of the tribes who revere it and their ancestors, with humanity at large.

Samaúma trees, one of the largest trees in the world flora, can easily reach a height of 70 meters. Known to absorb water from great depths of the Amazonian soil, it feeds itself as well as other species and connects us all through the air we breathe.

Indigenous people use its roots or ‘Sapobemba’ as a way of communication through the forest. By tapping the huge roots with a piece of wood, coded messages travel far in the jungle. Beside its medicinal properties, it protects the other trees in the forest and its inhabitants.



35

DAVID KASSMAN (B. 1971)

Blue Hall

Signed on front
C-Type Print
80 x 119 cm.
Executed in 2011
Edition of 5

Estimate £8,600

DONATED BY: The artist

Blue Hall was shot early one morning in Patagonia when temperatures dropped to minus 15 degrees celcius in a glacier in Perito Moreno National Park. These halls of ice immerse the viewer in what Kassman describes as endless dreams.



36

**HENRY HUDSON (B. 1982)
AND RICHARD HUDSON (B. 1980)**

Cymbopogon Densiflorus Stapf

Signed on the base
Mixed Tricolour Spray Paint on Grogged White Clay
41 x 25 cm.
Executed in 2016
Unique

Estimate £3,000

DONATED BY: The artists

This hand coiled tricolour, painted vessel, organ-like in appearance, is comparable to a carnivorous plant. The vessel also refers to sacred cups employed in shamanism, ayahuasca ritual and ceremony. This pot acts to transport the viewer into another realm, while offering a humorous metaphysical enquiry into human behaviour and endeavour, expanding upon the themes of human enquiry and transgression.



37

JUSTIN BRICE GUARIGLIA (B. 1974)

Glaciated Mountain Study - No. 107

Signed on back
Acrylic, Gesso, Wood Panel
45 x 35 cm.
Executed in 2017
Unique

Estimate £3,000

DONATED BY: The artist

Visual and conceptual artist Justin Brice Guariglia is known for his photographic, sculptural and installation based works that explore the relationship between humans and the natural world.

Beginning in 2015, Guariglia began flying on earth science missions with NASA embedded as an artist to collect raw materials for his work. The artist has frequently collaborated with philosophers, poets, scientists and writers to forge a deeper understanding of our ecological crisis, with the intention of using art as a catalyst for social and political change.



38

KATY LYNTON (B. 1968)

Celestial Alchemy

Signed on back
Oil on Canvas
92 x 76 cm.
Executed in 2019
Unique

Estimate £5,888

DONATED BY: The artist

Katy Lynton's work encapsulates a passion for the divine nature of reality, and our predisposition towards worship. The artist paints landscapes from the unseen and subtle realms, presenting them as 'real' places that exist and have probably been visited by all of us. Where are we really from? How did we get here? Who are our ancestors? What is our true purpose in being here now? These are all questions she seeks to address through her work.



39
LUCHO BRIEVA (B. 1965)

Balance 4

Copper and Brass Panels with a Steel Frame
50 x 50 cm.
Executed in 2018
Unique

Estimate £5,500

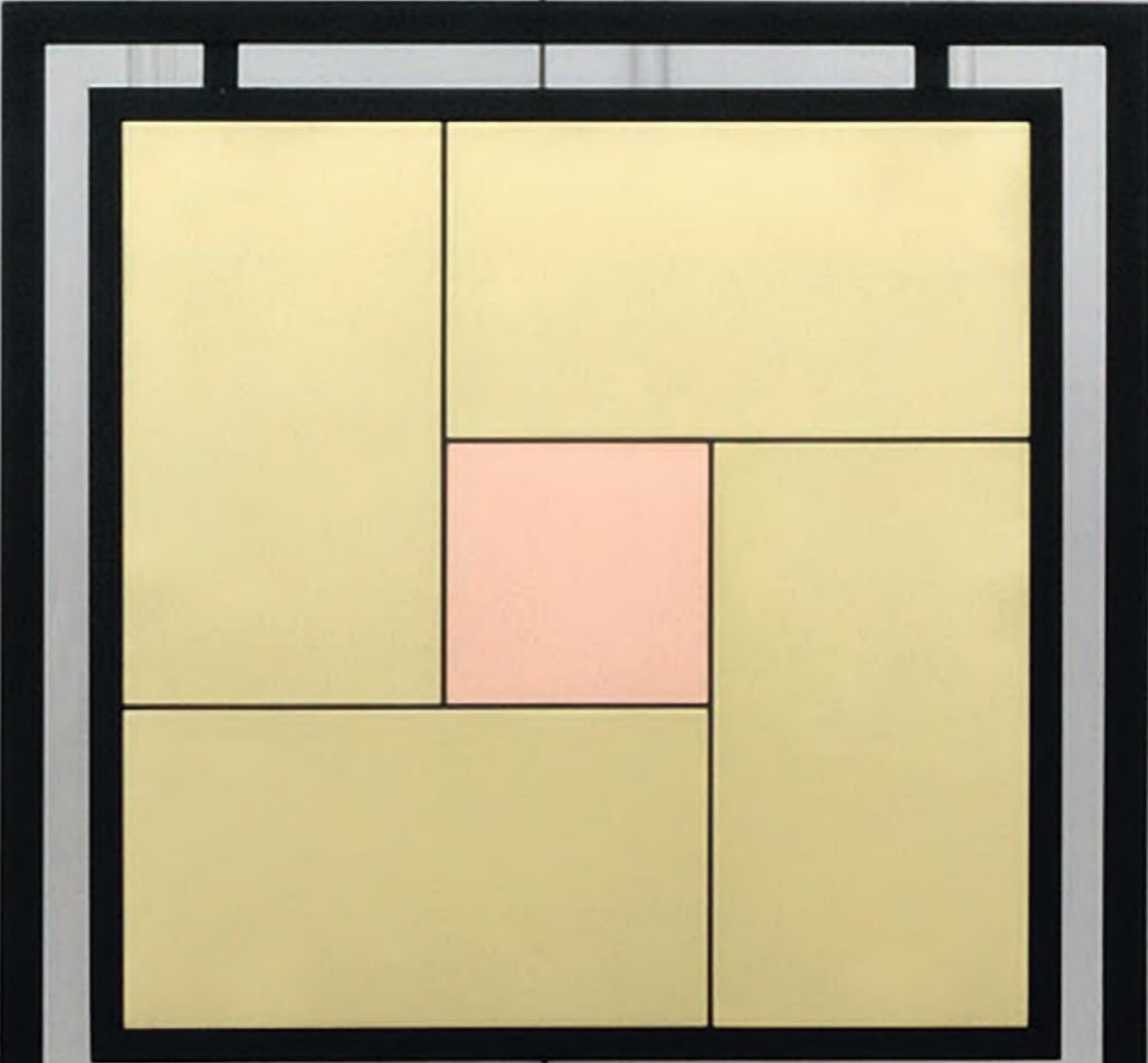
DONATED BY: The artist

“Behind each ancient and lasting civilisation, there has always been an understanding that the only world order in which human nature can happily exist, is the sacred order, the cosmological manifestation of ideal harmony and proportion. It is the responsibility of any creator to maintain, remind or even initiate others on the sacred harmonious and meaningful aspects of our universe. The opposite has shown a devastating lack of respect for life and an incapacity to construct meaningful lives.

The language of geometry, the principles of which are not of human invention but are discovered ready-made in nature, and the language of symbols, which have traditionally been used to transfer elements of perennial wisdom, are effective communication tools in the search for a profound connection with the world that we inhabit and our inner reality.

Each metal on earth represents a planet: the moon is represented by silver, the Sun by gold, Mars by iron... Each planet also represents a God or Goddess. In this particular piece, the artist uses the square at the centre of a larger square to symbolise the heart. The use of copper alludes to Venus which is also the planet of Venus the goddess of Love.

The four elements around the ‘heart’ represent realms that constitute the essence of human life, in Christian Esotericism. These are: the physical, the rational, the emotional and the spiritual. Neglecting any of the four would end in imbalance. Maintaining each of them would generate balance.”



40

MALOU ERICSSON (B. 1973)

Beyond All Measure #5

Signed Certificate of Authenticity provided with artwork
Archival C- Type Photographic Print
103 cm. Diameter
Executed in 2019
Edition 2 of 5

Estimate £5,000

DONATED BY: The artist

Malou Ericsson takes her inspiration from spontaneous nature, and the nature of spontaneity and perception. The dance of the ephemeral moment - the field connecting all things - the fine line between the solid and material, and the invisible and implied - are explored with curiosity and wonder.

The piece is taken from her installation project, *Beyond All Measure*, looking at how we may access and experience our time-less spaces within. Spaces that are perhaps connected in the same way that energy and light are infinite. Engaging with the essentially playful element necessary to all naturally evolving wisdom, this work is imbued with the flux between innocence and knowing.

Ericsson's photographs are shot on film and do not involve digital manipulation - the analogue, organic nature of film being intrinsic to her work.



41

MAMAKAN (B. 1971)

Kohekohe Love

Signed Certificate of Authenticity provided with artwork
Canson Infinity Platine Fibre Rag
252 x 60 x 4 cm.
Executed in 2019
Unique

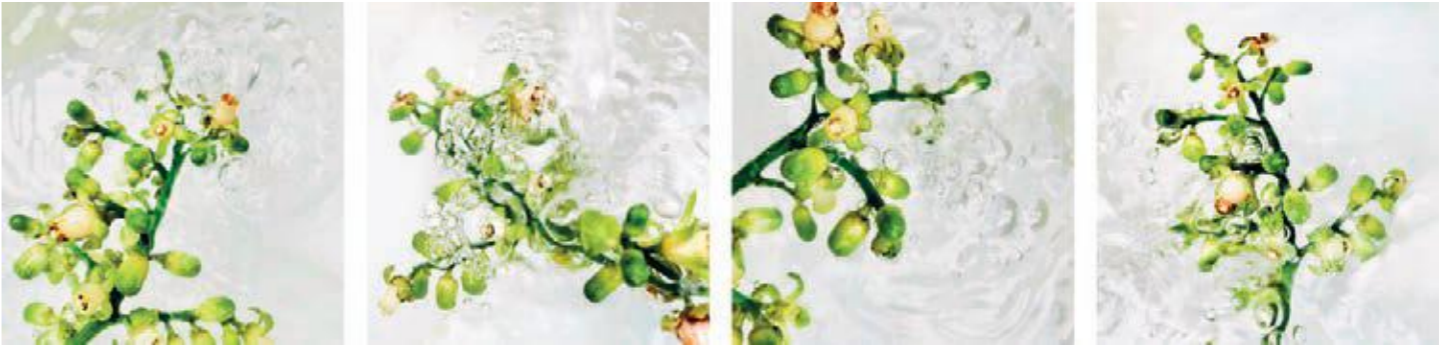
Estimate £7,000

DONATED BY: The artist

A Danish-born, New Zealand-based botanical artist, Mamakan works with large-scale photography, public installations and interactive experiences involving touch, taste and scent.

New Zealand/Aotearoa was the last major landmass to be discovered by humans. The native flora is unique as it evolved in isolation for millions of years and eighty percent of the trees, ferns and flowering plants are endemic, found only in New Zealand.

KoheKohe is the Maori name for the beautiful native tree, *Dysoxylum spectabile*. The Kohekohe flowers are rarely seen as the tree doesn't flower every year. When it does blossom, its small white flowers allude to the most exquisite fragrances imaginable. In this work, the flowers seem to spell the word 'love', hence the title. The flower specimens, once collected, were immersed in water, under natural light, referencing life between the sea and the sky.



42

ODYSSÉE DAO (B. 1970)

Vivarium/I Remember

Signed on back
Watercolour, Gouache, Ecoline, Plexiglass
84 x 60 x 6 cm.
Executed in 2019
Unique

Estimate £6,500

DONATED BY: The artist

Vivarium/I Remember is both a painting and a sculpture.

Here, two strong symbols of primitive, earthly life are brought together as a sacred relic and a bygone era. The couple's walk and the lush tropical forest are put under a bell, like specimen to be preserved.

This piece symbolizes a universal moment for human beings bound by love and the precious memory of intact nature at the level of our collective consciousness.

Its protective casing reveals a paradox between the idealistic notion of a possible harmony and symbiosis between humans and nature, and humankind viewing itself as an endangered species, yet taking on the role of dominant predators, ultimately leading to its own downfall.



43

OLIVER BARNETT (B. 1979)

Kalandreamer

Signed on front
Archival print on Hahnemühle Photorag
130 x 158 cm.
Executed in 2017
Edition of 3 + 2AP

Estimate £3,000

DONATED BY: The artist

By merging two natural sanctuaries, *Kalandreamer* yields a sense of stillness and balance for the viewer to drift into and shield themselves from the distortions of modern life.

The trees, Giant Yellowwoods, once dominated the canopy of Southern Africa's Afromontane forests and were known to early settlers as 'Kalanders' due to their ability to pierce the canopy and act as a compass for navigating the forests. At the time the artist made this picture, he was experimenting with lucid dreaming, in which he would often find himself in the canopy amongst the many bryophytic plants, ferns and lichens that find refuge in the sprawling trunks. The body of water, Kaaimans River, is a place far from human activity and once home to countless large animals such as caimans and hippopotami. Depicting space and time, dream and 'reality', this image intends to unearth timeless connections between living bodies of energy.



44

PAULO NAZARETH (B. 1977)

Chapéu Dos Outros Ou Espada De Ogum II

Cotton Paper
60 x 45 cm.
Executed in 2019
Edition 1 of 3 + 2 AP

Estimate £6,100

DONATED BY: The artist, courtesy of Mendes Wood DM São Paulo, Brussels, New York

Paulo Nazareth's performance and installation-based work often draws upon his joint African and indigenous heritage. His ongoing work *Cadernos de Africa* (African Notebooks) is presented as part of *Journal*: a five-year walk he began in 2013 from his home in a favela near Belo Horizonte, going through Brazil and then crossing the entirety of the African continent from Cape Town. His walk-performance represents a slow, real-time inquiry into his experience and that of the individuals he encounters on the way, tracing a subtle matrix of connections that bridge not only people but communities and shared histories.



45

PETER MATTHEWS (B. 1978)

6 Hours In and With the Pacific Ocean (Chile)

Signed on back
Pen, Rust and Earth on Paper
56 x 94 cm.
Executed in 2018
Unique

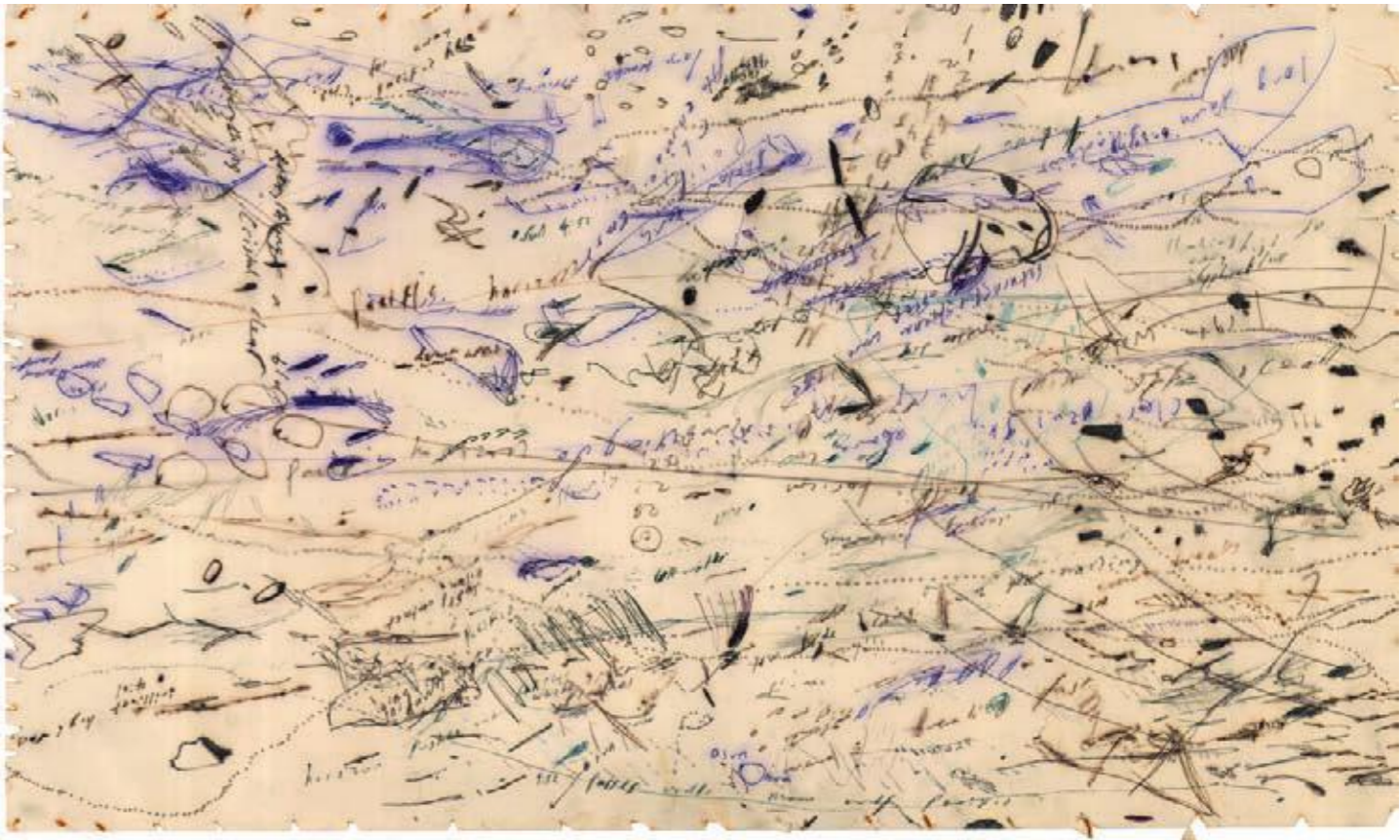
Estimate £3,000

DONATED BY: The artist

The notion and experience of a journey as well as immersion with the ocean and nature, are central elements of Peter Matthews's practice. The artist works directly with the mystical elements, the dimensions and truths that shape and inform our experience and understanding of who and where we are in the universe.

Working in solitude in the ocean, his process is informed by the poetic blending of rituals, dreams, the spirit world, chanting, intuition, superstition, the paranormal and the diversity of fringe and earth sciences, while moving and responding to what is happening in our contemporary world.

6 Hours In and With the Pacific Ocean (Chile) was created entirely while physically immersed in the Pacific Ocean along the Atacama coast of Chile in January, 2018. The drawing records a live stream of observation and consciousness while in suspended animation with the ocean and earth.



46

PHILIP VOLKERS (B. 1980)

Winter Is Here.

Signed Certificate of Authenticity provided with artwork
C-Type Print
100 x 75 cm.
Executed in 2017
Unique

Estimate £3,000

DONATED BY: The artist

"I think the clearest way to understand how the universe works it to study and observe nature. The mountain in this picture is called Mont Pourri, the literal translation is 'rotten mountain'. It was given this name by climbers as it is always crumbling and moving, making it hard to ascend. There is so much wisdom in the mountains but they move so slowly that it's almost imperceptible, but they are alive, they move and breath, you just have to stop and listen. If you are quiet enough they will talk back to you and when they do it's magic."



47

REGINA DEJIMÉNEZ (B. 1984)

UNIT

Hand-woven Sewing Thread
100 cm. Diameter
Executed in 2019
Edition 1 of 1

Estimate £8,500

DONATED BY: The artist

Using textiles as structures to build layers, Regina Dejiménez dives into the micro and macro of the thousands of invisible, symbolic and touchable layers that make up the visible world. With such a simple and everyday elements as the thread, the artist creates a flexible and almost invisible plot, echoing the sensitive and subtle weft of vibrations.

"The inside of our bodies create our organs, our skin retains these organs. Houses and places we inhabit make up another layer of human society that falls within a greater ecological and planetary system." All these parts have connections and patterns in common that the artist captures through representations of processes and organic forms in accordance with the geometry and layers of the universe. This work resembles a complex map of connections encapsulating an instant of the eternal process of life.



48

ROEE AMINOF (B. 1981)

Yagata Ve Matzata Taamin

Signed on front
African Wood, Acrylic and Gold Markers
120 x 100 cm.
Executed in 2019
Unique

Estimate £4,500

DONATED BY: The artist

Drawing inspiration from nature, Roe Aminof journeys into the nature reserve in his backyard, the mountains and wild desert of northern Israel where he was born, in 'search of the heart'. These explorations have taught the artist that there is not always an answer, but that the answer is the journey itself.

"I trust in nature and its treasures full of healing and love, therefore I allow myself to go on a deep journey in my consciousness during these nature excursions". One such journey, revealed the shapes, colors and the story from which *Yagata Ve Matsata Taamin* was born. This familiar proverb derived from ancient Jewish texts translates into 'Seek and you shall find'.

Aminof likens his process of creating a painting to processes in nature from which entire worlds are built- dense, slow, layer upon layer until the whole is revealed.



49

RUBEN BRULAT (B. 1988)

Sulfuric Acid Pools

Hahnemühle Photorag
120 x 96 cm.
Executed in 2016
Edition 1 of 5 + 2AP

Authentication certificate will be sent by artist after sale

Estimate £3,500

DONATED BY: The artist, courtesy of LAMB Arts

Sulfuric Acid Pools is part of a body of work in which Ruben Brulat immerses himself in an environment fully unknown to him. Spending months in the Danakil-Rift region of Ethiopia, one of the hottest places on Earth, the artists created a bond with the landscape. It was here that he first encountered bright colour in the bubbling acid pools through the sedimented ground, a place where bacterial life first appeared.-Through his photographs, Brulat attempts to touch the archaic memory, bacterial state, microscopical past and unconscious history of an experience of being.



50

SIDNEY REGIS (B. 1979)

The Spaces Between Us

Signed on back
Ultrasmooth Hahnemühle
55 x 80 cm.
Executed in 2011
Edition of 5 + 2AP

Estimate £2,400

DONATED BY: The artist

The Space Between Us is a personal and delicate exploration of the invisible. Sidney Regis presents a fertile, fragile and ambiguous space between man and nature, between sky and sea. The hands are partially translucent, disguising themselves in shadows, sometimes in reflections, they mingle with clouds, with the sky, and the sun bursts refracting in the water. Is it a physical or imaginary plane, the real, the dream, or the afterlife? From the ambiguity of these different dimensions arises the possibility of interpreting the work through our own intentions: the choice to see separation, reunion or an invitation. (By Salimata DIOP)



51

SIMON ENGLISH (B. 1959)

Florence Forest Gate

Signed on back
Pencil and Ink on Paper
36 x 56 cm.
Executed in 2019
Unique

Estimate £2,300

DONATED BY: The artist, courtesy of Allegra Projects

Simon English is interested in works he can not fully understand or that have come about in a serendipitous way. As such, these two drawings were not originally made to be together. He says that it is challenging to put logical thought on things that are drawn together beyond his control.

Here, a thick black line cuts through the forest and maps itself onto the forehead of Florence. The name 'Florence' comes from the Latin 'Florens' which means 'Blossoming' or 'Growth'. 'Blossom' is a name the artist gives to those he loves.

"Wisdom and Nature must now go hand in hand, we can not afford to destroy the things we love."



52

SUKHI BARBER (B. 1971)

Thaw

Signed on front
Bronze
25 x 20 x 14 cm.
Executed in 2016
Edition of 16

Estimate £5,000

DONATED BY: The artist

"When we perceive reality we freeze it into something solid and dependable. In our memories things are exactly how we left them, frozen in time. This habit of having a fixed idea of things obstructs us from experiencing the actual living moment before us, which is utterly spontaneous, energetic and fluid. Therefore, when we loosen our attachment to our concepts, those icy ideas naturally thaw into the creative flow of the present moment."



53

TAKAKO MATOBA (B. 1963)

Life / Death

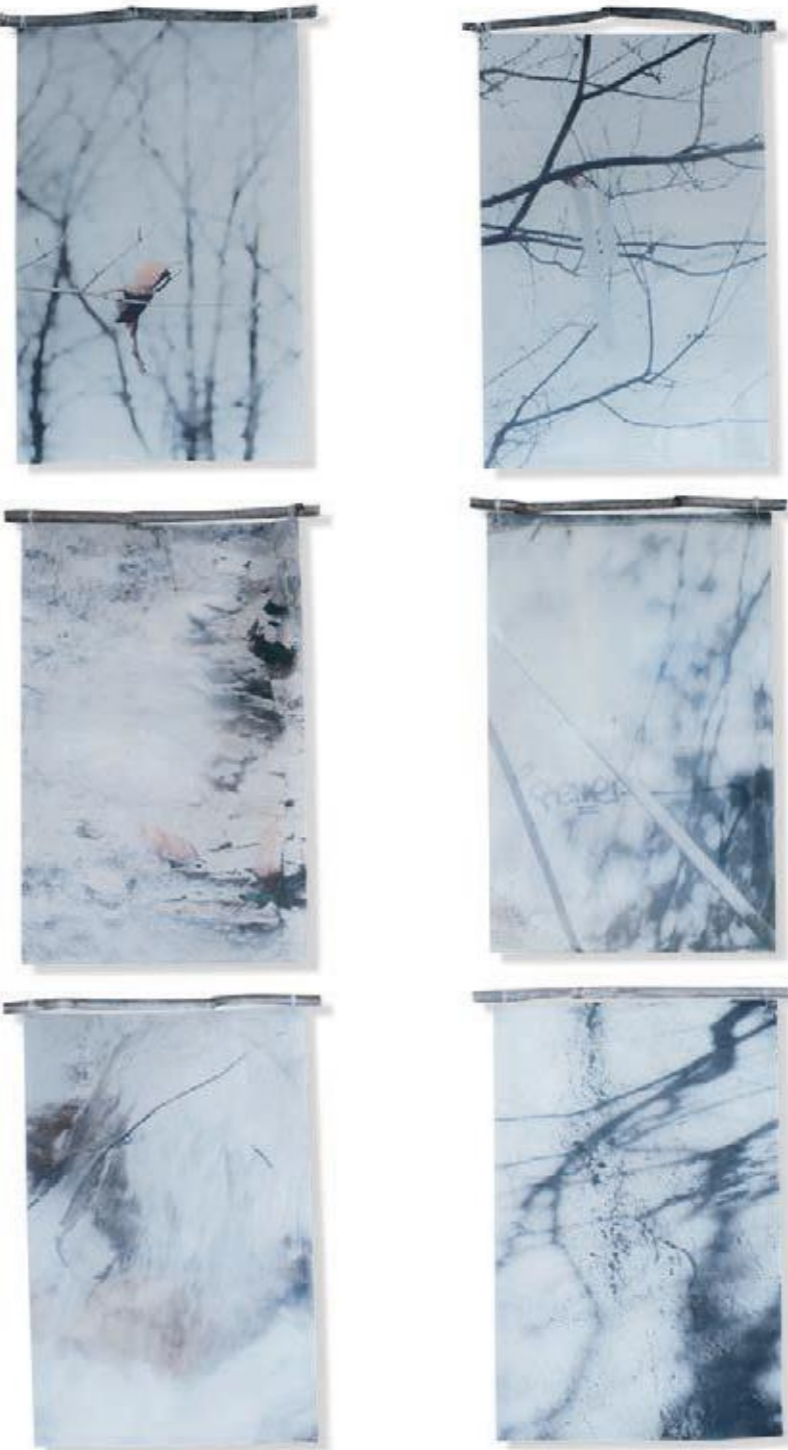
Archival Pigment Ink, Kozo Paper, Beeswax, Twig, Monofilament Thread
150 x 75 cm.
Executed in 2016
Edition 1 of 7

Estimate £3,000

DONATED BY: The artist

Takako Matoba's practice responds to the intangible forces of life and the interconnectedness of all things, in particular how the environment affects the way we feel and how we affect the environment.

The translucency and verticality of this work echoes Japanese shoji and scrolls. The images in *Life / Death* were chosen from images taken over six months of daily walks in Northern California's Redwood Regional Park. Within these photographs we see life and death. Life is vegetation, Earth and water. Death is unnatural elements, resource extraction or land abuse.



54

TEMPLE JEWELS IBIZA (B. 2012)

Golden Eagle Feather and Peyote

18k Solid Gold and Emerald
5 x 1 x 0.5 cm.
Executed in 2019
Edition Pachamama Wisdom

Estimate £4,000

DONATED BY: The artist

Temple Jewels Ibiza' collection is inspired by the wisdom of nature and ancient mystical symbolism.

The Peyote Cactus is a sacred plant that shares deep wisdom. Known as the messenger of the heart, Peyote is a psychedelic cactus that grows naturally in South Texas and Mexico. It is one of the rarest varieties of psychedelic medicinal plants used by many native tribes throughout history to seek spiritual and essential life guidance. The golden eagle feather is a sign of freedom, wisdom and mastery. The emerald centre represents the heart chakra and the power of love. The six White Diamonds represent purity and strength.





55

THIA KONIG (B.1965)

*Angkor Wat Diptych- Apsara Dancers Bas
Relief and Banyan Tree at Banyan Temple*

Signed
Inkjet print on Hahnemuhle Fine Art paper
40 x 50 cm each.
Executed in 1998
Edition 2 of 25

Estimate £2,000

DONATED BY: The artist

Apsara is the traditional art of dancing in Cambodia, and is a UNESCO-recognized heritage. Due to a fading Angkok culture, Apsaras were almost a lost art until their recovery by Queen Sisowath Kossamak in the 20th century. The recovery process was developed according to depictions of Apsara in Angkor Wat. Through this effort, the art of the Apsara dance has been revived and immersed with the original Khmer spirit.

Beside it, the Banyan Temple, built in the 12th Century, is slowly being reclaimed by a Banyan tree.







LE CIEL FOUNDATION ART COMMITTEE

Jessie Balfour-Lynn
Christine Insley Green
Elizabeth Smith
Victoria Dreesmann
Alina Coughlan
Flora Fairbairn
Le Ciel Foundation

LE CIEL FOUNDATION CO-FOUNDERS

Sophie Monpeyssen
Lucy Martens
Jessie Balfour-Lynn
Olivier Girard
Peter Giblin
Sebastian Curtis
Maciej Sedlak
Sam Evitt

WITH SPECIAL THANKS TO YOU

Alain Rivière
Alexandra Baker
Carla Bamberger
David Goodman
David Kohl
Devin Shomaker
Duncan Walker
Ghislain Pascal
Giuseppe Ciardi
Guy Sangster
Henry Rich
Jeremy Smith
Joseph Turner
Leslie and Richard Balfour-Lynn
Marcelle Delahaye Camping
Nick Finch
Olivia Cope
Olivier Girard
Rachel Kearl
Roxane Molicchi
Sacha Lichine
Sarah Vaughan
Scott Lazerson
Sophie Monpeyssen
Stella Smith
Suzan Batur
Tinko Czetwertynski
Wendolyn Holland

Photo credit to all photographs in the catalogue
but not in the sale to Tinko Czetwertynski





CONDITIONS OF SALE

The property offered in this sale and listed in this catalogue is being sold by Le Ciel Foundation, a charity located at 1a Redcliffe Mews, SW10 9JT, London and registered with the Charity Commissioners under the number 1881658.

The following terms and conditions govern the sale of all property offered by Le Ciel Foundation and, by bidding at the auction, whether in person or through an agent, the bidder is deemed to have read and agreed to be bound by these Conditions of Sale.

1. Christie's acts as agent for Le Ciel Foundation. Unless otherwise agreed, the sale of the Lots will result in contacts made between Le Ciel Foundation and the Buyer.
2. The Buyer shall be the person with the highest bid accepted by the auctioneer.
3. The auctioneer has the right to refuse any bid and to advance the bidding at his absolute discretion, and in the case of error or dispute, to put up an item for bidding again.
4. Statements by Le Ciel Foundation in the catalogue, or made orally or in writing elsewhere, regarding the authorship, origin, date, size, medium, attribution, genuineness, provenance, condition or estimated selling price of any Lot are merely statements of opinion, and are not to be relied upon as statements of definitive fact. Neither Christie's nor Le Ciel Foundation are responsible for the correctness of any such statement not for any other errors of description or for any faults or defects in any Lots. Catalogue illustrations are for guidance only.
5. Buyers are responsible for satisfying themselves concerning the condition of goods and the matters referred to in the catalogue description.
6. If a prospective Buyer gives Christie's instructions to bid on their behalf, by using the form printed in the catalogue, Christie's shall use all reasonable efforts to do so, provided these instructions are received no later than 24 hours before the sale. Bids should be placed in pound sterling. If Christie's receives commission bids on a particular Lot for identical amounts, and at auction these bids are the highest bids for the Lot, it will be sold to the person whose bid was received first.
7. If prospective Buyers make arrangements with Christie's less than 24 hours before the sale, Christie's shall make reasonable efforts to contact the bidders to enable them to participate by telephone, but in no circumstances will Christie's or Le Ciel Foundation be liable to any prospective Buyer as a result of failure to do so.
8. Subject to the auctioneers discretion, the striking of the hammer marks the acceptance of the highest bid and the conclusion of a contract of sale between Le Ciel Foundation and the Buyer.
9. Following the sale, the Buyer must provide Le Ciel Foundation with his or her name and permanent address.
10. All Lots are to be paid for in full on the night of the sale at the Payment Desk.
11. The Lots can either be collected in person from Christie's London on the 9th April or the Lots can be submitted to the buyers from a 3rd party storage facility in London following the close of the exhibition. Shipping costs shall be made directly to the chosen transport company by the buyer. The Buyer will not acquire title to the Lot until amounts due to Le Ciel Foundation have been paid in full. From the time of collection, the Lot will be entirely at the Buyer's risk.
12. Payment can be in credit card or cheque made payable to Le Ciel Foundation. A surcharge of 1.2% + £ 0.20 for EU Visa and MasterCard transactions will be taken on all payments processed online. A surcharge of 2.9% + £ 0.20 for Non EU and American Express transactions will be taken on all payments processed online. A surcharge of 1.69% will be taken on all payments made through the card reader on the night.
13. These Conditions of Sale are subject to English Law, which shall apply to their construction as well as to their effect. For Christie's benefit, Le Ciel Foundation and the Buyer submit to the exclusive jurisdiction of the English Courts.



CÁSSIO CAMPOS VASCONCELLOS 1966
A picturesque voyage through Brazil #144
Inkjet Print on Cotton Paper
75 x 112 cm.
Executed in 2017

LeCiel Foundation



IN ASSOCIATION WITH

CHRISTIE'S